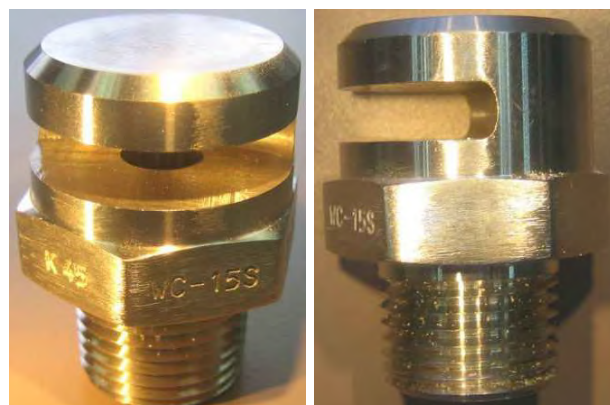


# WC series

## WATER CURTAIN Nozzles



MODEL	WC - in Brass IS319 / ASTM B16 WCS - in 316 stainless steel construction
Spray Angle	150 degrees Horizontal FAN

MAXIMUM WORKING PRESSURE	12.3 Kg./Sq.cm. ( 175 PSI )
--------------------------	-----------------------------

EFFECTIVE WORKING PRESSURE	1.4 TO 3.5 Kg /Sq.cm. ( 20 TO 50 PSI)
----------------------------	--

END CONNECTION	WC & WCS with ½" Male BSPT or NPT
----------------	--------------------------------------

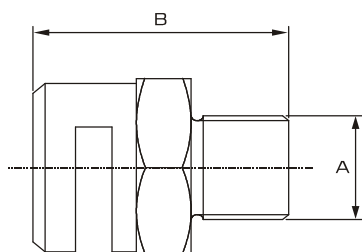
K- FACTOR	Model : WC-15 / WC-15S K20, K23, K32, K42, K58, K79.
-----------	--

APPROXIMATE WEIGHT	0.180 Kg.
--------------------	-----------

FINISH	WC- Brass with Nickel Chrome plated WCS - Natural 316 stainless steel
--------	--

ORDERING INFORMATION	Please specify Model, and K factor
----------------------	------------------------------------

**DIMENSION** in millimetre ( Approximate )



MODEL	A	B
WC	½" BSPT or (M)NPT	44
WCS	½" BSPT or (M)NPT	44

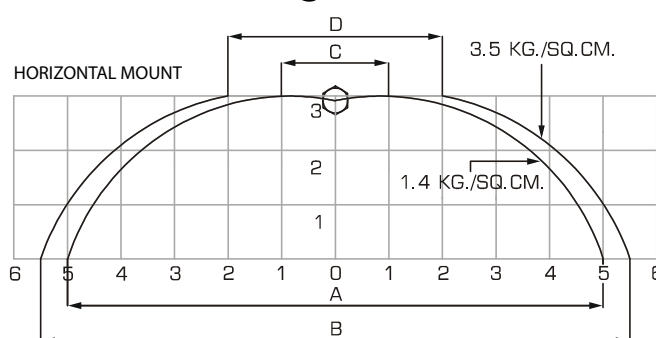
Water Curtain Nozzle distributes water in a flat curtain extending all the way to the ground.

Water Curtain Nozzle when mounted in pendent position acts as a window spray nozzle to protect interior walls, windows and other opening of the building which are affected by fire.

The nozzles when mounted in horizontal position with flow towards ground, a flat water curtain is produced to segregate the area which is under fire.

Water Curtain Nozzles are available in Brass and Stainless Steel construction with different flow rate.

### SPRAY TRAJECTORY @ 3.5 bar



**DIMENSION** in meters ( Approximate )

	K20	K23	K32	K42	K58	K79
A	10.0	10.0	11.0	11.0	12.2	13.8
B	11.0	11.0	12.0	12.0	13.3	14.2
C	01.8	01.8	02.2	02.2	03.3	04.4
D	02.2	02.2	02.4	02.4	03.6	04.8

