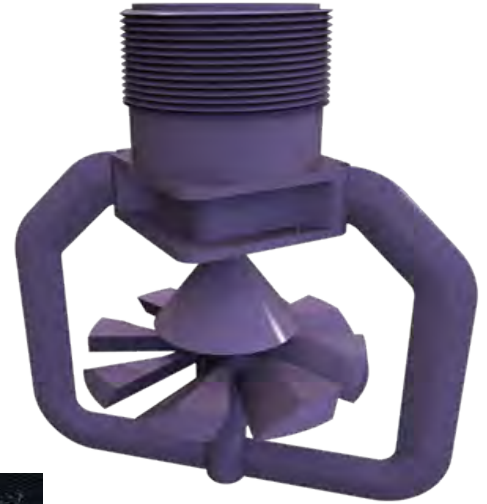




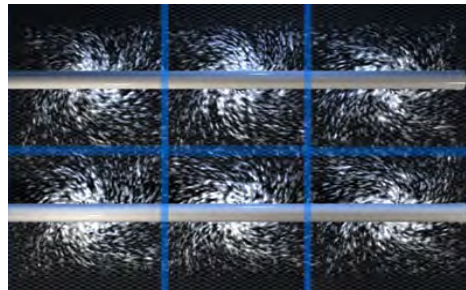
SPF series

COOLING TOWER NOZZLES



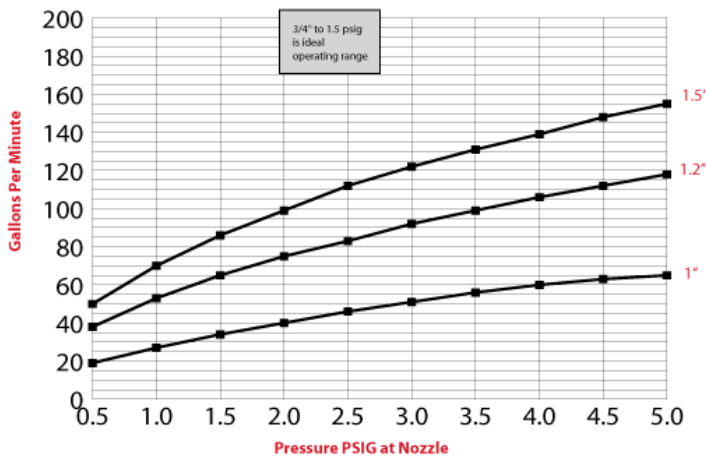
SPIN FREE NOZZLE

SpinFree Nozzle produces a near perfect square pattern. It increases thermal performance in cooling towers and other cooling equipment by 12%, simply by covering the maximum surface area of the cooling tower in square pattern as opposed to the inefficient round trajectory.



Flow Charts

Output Capacity Chart



Square Performs Better

Output Capacity Table

	1"	1.2"	1.5"
5	19	38	50
1	27	53	70
1.5	34	65	86
2	40	75	99
2.5	46	83	112
3	51	92	122
3.5	56	99	131
4	60	106	139
4.5	63	112	148
5	65	118	155

Square Spray Pattern

The SpinFree nozzle produces a **square water distribution pattern**, which will increase thermal performance by 10% to 12%.

Variable Flow Capabilities

The SpinFree nozzle has variable flow capability with a 2 to 1 turn down ratio, allowing pumps to be **cycle off during cool climatic** conditions or when loads demand are down.

Operates Just 3" off the Surface

The SpinFree nozzle operates only 3" above the **fill media** reducing structural height requirements in new tower construction. Also this feature reduces tower pump head by approximately (2) ft.

Low Pressure Operation

The SpinFree nozzle operates at **only (1) lb of pressure**.