



# WE Cast series HOLLOW CONE SPRAY

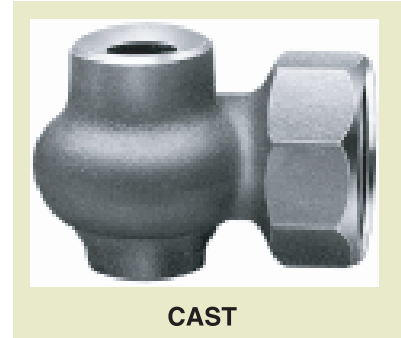
### DESIGN FEATURES

- Large free passage
- nozzles with no internal parts
- One-piece casting
- Female connection



### SPRAY CHARACTERISTICS

**Spray pattern:** Hollow Cone  
**Spray angles:** Narrow to Medium  
**Flow rates:** 15.3 to 2230 l/min  
 Connections in NPT or BSP

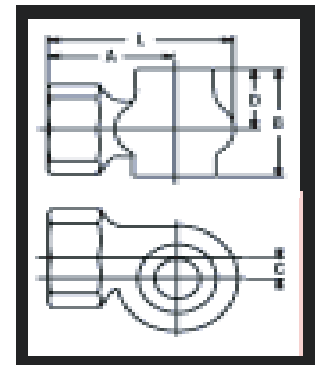


CAST

Dimension changes depending on Cast or Bar Stock

### DIMENSION

SIZE	A (mm)	B (mm)	C (mm)	D (mm)	L (mm)	WT (kg)
1	44.5	47.0	9.0	26.0	66.5	0.31
2	74.6	93.6	18.2	53.1	115.1	1.4
2-1/2	88.9	114.3	23.8	68.3	140.5	1.9
3	112.7	213.6	28.7	150.8	176.2	8.6
	122.2	314.3	39.7	234.9	209.5	51.7



**Flow Rate specifications**  
 Hollow Cone, medium to wide angle

MATERIAL : BRASS, 304SS, 316SS

SIZE INCH	MODEL	ORIFICE DIA. mm	FREE PASS mm	LITERS PER MINUTE @ BAR										SPRAY ANGLE AT (BAR)		
				0.2	0.3	0.5	0.7	1.0	1.5	2.0	3.0	4.0	7.0	0.5	1.5	4.0
1	10	8.73	8.73	15.3	18.7	24.2	28.6	34.2	41.9	48.3	59.2	68.2	90.5	100	100	100
	15	9.53	9.53	18.3	22.5	29.0	34.3	41.0	50.2	58.0	71.0	82.0	108	115	115	115
	20	11.1	11.1	23.4	28.7	37.1	43.9	52.4	64.2	74.1	90.8	104.8	138	120	120	120
2	30	36.5	27.0	85	104	135	160	191	235	270	330	380	500	120	120	120
	40	36.5	32.9	110	134	173	205	245	300	345	425	490	650	120	120	120
	60	36.5	39.7	146	179	230	275	325	400	460	570	650	860	125	125	125
3	120	57.2	52.4	290	360	460	550	650	800	920	1130	1310	1730	120	120	120
	140	57.2	58.7	340	420	540	640	760	930	1080	1320	1530	2020	120	120	120
4	150	79.4	50.8	365	450	580	690	820	1000	1160	1420	1630	2160	120	120	120
	175	79.4	59.1	425	525	670	805	950	1170	1350	1650	1910	2520	120	120	120
	200	79.4	68.3	485	600	770	910	1090	1330	1540	1890	2180	2880	120	120	120
	225	79.4	74.6	550	675	870	1025	1230	1500	1730	2120	2450	3240	120	120	120
	250	79.4	82.6	610	750	960	1140	1360	1670	1930	2360	2720	3600	120	120	120
	275	79.4	92.1	670	825	1060	1260	1500	1840	2120	2600	3000	3960	125	125	125